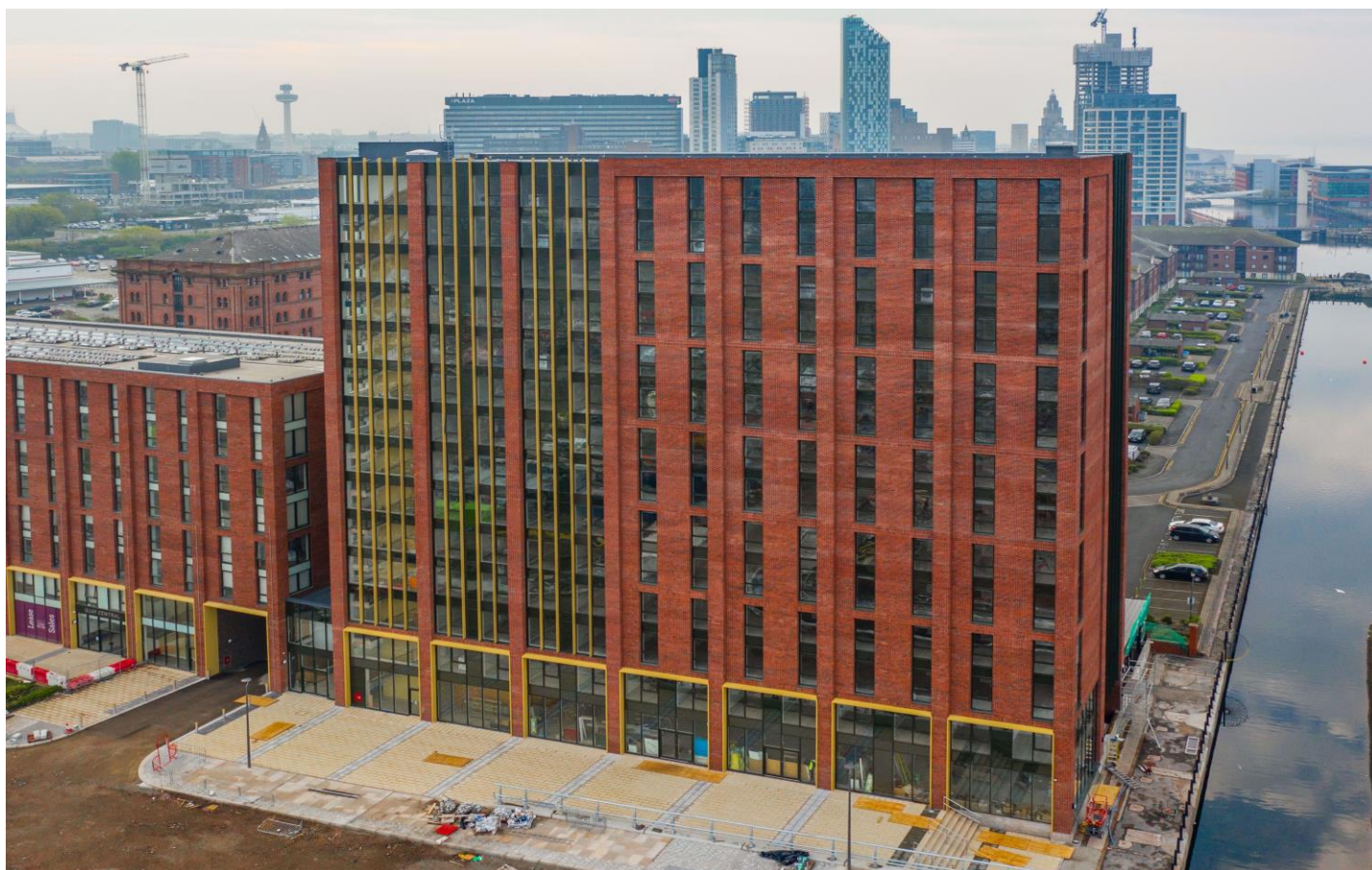




ASPIRE RESIDENTIAL



Apartment 713, Quay Central, 9 Jesse Hartley Way
Liverpool L3 0AD

£950pcm

Brand New Apartment

Furnished

Fitted Kitchen

Free Wi-Fi

Two Double Bedrooms

Allocated Parking

EPC Rating B

Available Now

Aspire Residential is delighted to offer a furnished apartment with allocated parking at the Quay Central development. The high-specification new-build situated in Liverpool Waters comprises two double bedrooms, en-suite shower room, bathroom, fully equipped kitchen and free Wi-Fi. The Apartment is furnished, allocated parking space and available now.

Aspire Residential, 28 Goring Road , Worthing, BN12 4AD
Phone: 01903 259961, Email: info@aspireresidential.co.uk
www.aspireresidential.co.uk



Communal Entrance

Via Jesse Hartley Way leading into the communal lobby area. Stairs and lift to the upper floor.

Entrance Hall

Via a wooden paneled door. Wooden flooring. Doors leading to:

Utility Cupboard

Housing the hot water cylinder. Washing/dryer machine. Electric fuse box.

Living Room 16' 3" x 9' 6" (4.95m x 2.89m)

Double glazed rear southerly aspect window with views and Liverpool waters. Electric radiator. Wooden flooring. TV & Telephone points. Entryphone system. Open plan leading to:

Kitchen

Matching wall and base units incorporating the integral electric oven, four ring electric hob, splash back and extractor hood above. Integral dishwasher. Fridge/freezer. Stainless steel sink, drainer and mixer tap. Extractor fan. Under counter LED lighting.

Bedroom One 15' 9" x 9' 6" (4.80m x 2.89m)

Double glazed southerly aspect window overlooking Liverpool Waters. Electric radiator. Mirror fronted sliding doors into double wardrobe with hanging and shelving space. Wooden flooring. Door leading to:

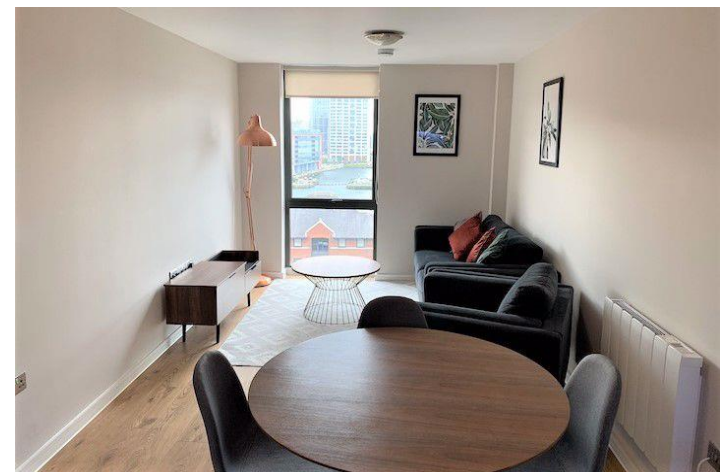
En-Suite Shower Room

Corner shower cubicle with thermostatic shower and glass shower screen. Wash hand basin with vanity storage unit under. Low level WC. Electric towel radiator. Tiled flooring and extractor fan.



Bedroom Two 12' 0" x 9' 8" (3.65m x 2.94m)

Double glazed southerly aspect rear window overlooking Liverpool Waters. Built in mirror fronted sliding door double wardrobe with hanging and shelving. Electric radiator. Wooden flooring.



Bathroom

Paneled bath with thermostatic shower over and glass shower screen. Low level WC. Wash hand basin with vanity unit and storage under. Tiled flooring. Electric radiator. Extractor fan.

